



# ARBenefits Newsletter

Q2 | 2024 | Retiree

## Baptist Health is back in-network



Baptist Health and UnitedHealthcare have reached a multi-year agreement that ensures Baptist Health's providers and hospitals are in-network for those members.



## Need Medicare Part D?

If you are approaching Medicare Eligibility this is when you need a Part D Medicare Plan

State Employee on Health Advantage Primary: **No**

State Employee on UnitedHealthcare MAPD: **No**

Public School Employee on Health Advantage Primary: **Yes**

Public School Employee on UnitedHealthcare MAPD: **No**



## MAY IS SKIN CANCER AWARENESS MONTH

Skin cancer is the most common form of cancer and the most preventable. Wear sunscreen and stay in the shade when possible to limit sun exposure.

For any questionable marks or moles, see a dermatologist.



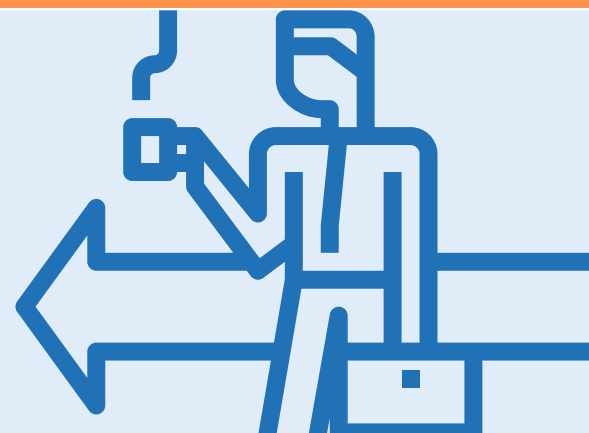
## MAKE SURE YOUR CONTACT INFORMATION IS UPDATED

Update your email, address, and phone numbers in the ARBenefits portal so you don't miss any communication about your benefits.



## COMING OUT OF RETIREMENT?

If you are planning on coming out of retirement, you will have to be removed from your ARBenefits Medicare Plan (MAPD or Primary). To maintain eligibility with ARBenefits, you can only return to work with the state or a school district.





## HOW CHANGES ARE MADE

ASE/PSE  
Commission



Board of  
Finance



Arkansas  
Legislative  
Council

For more information and to sign up for updates visit  
<https://www.transform.ar.gov/employee-benefits/about-us/ebd-advisory-commissions/>

## The MAPD plan has benefits that go beyond traditional Medicare

- Dental benefits
- \$150 allowance for glasses/contacts
- \$2,800 hearing aid allowance
- Free gym memberships
- Over-the-counter benefits

Learn more at [www.transform.ar.gov/employee-benefits/retirees](http://www.transform.ar.gov/employee-benefits/retirees)

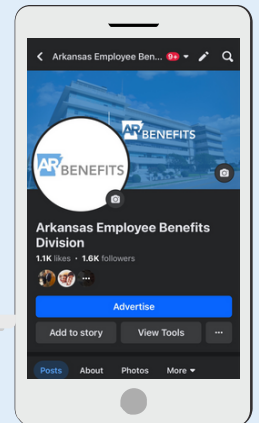
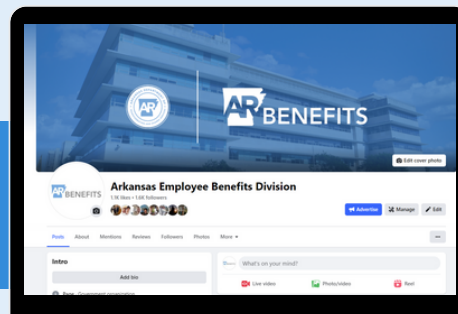
# DID YOU KNOW?

## Employee Benefits Division is now on Facebook!

Make sure to follow us for information about your benefits and any announcements.

All posts pertaining to retirees will be highlighted orange.

Follow EBD on Facebook at [www.facebook.com/ArkansasEmployeeBenefitsDivision](http://www.facebook.com/ArkansasEmployeeBenefitsDivision)



# FREQUENTLY ASKED QUESTIONS

Do you have questions about your Employee Benefits? Check out the following link:

<https://www.transform.ar.gov/employee-benefits/faq/>

Follow the Department of Transformation and Shared Services on social media!



[Questions? Contact us today!](#)

Email: [Ask.EBD@arkansas.gov](mailto:Ask.EBD@arkansas.gov)  
Member Services: 877-815-1017